

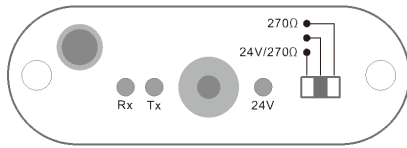
Software <http://doc.woyatech.cn/modem/cn>

Support support@woyatech.com

Android App <http://hart.woyatech.com>

① Panel

• TOP



• Rx LED

Flash : Receiving data from transmitter
Solid : Abnormal, refer to "FAQ"

• Tx LED

Flash : Sending data to transmitter
Solid : Abnormal, refer to "FAQ"

• 24V LED

Solid : Outputting 24V DC

• Switch

Left : Enable 24V DC output and built-in resistor
Middle : Disable 24V and built-in resistor
Right : Disable 24V, enable built-in resistor

• Bottom



• Run Led

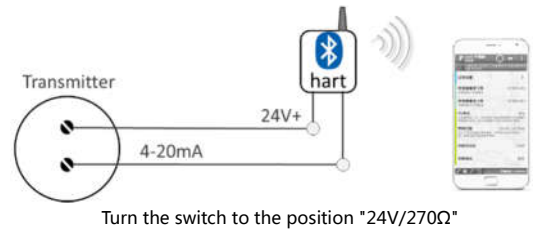
Flash : Waiting connect bluetooth
Solid : Connection completed

• Charge Led

Solid : Charging Off : Not charged or full

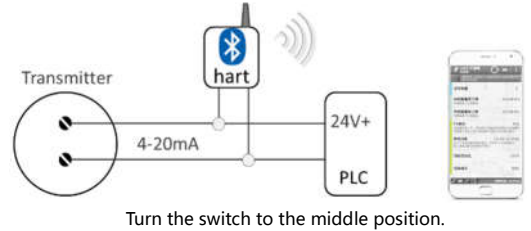
② Connect HART Transmitter

- **Use built-in 24V** In general, you can directly use the built-in 24V/270Ω.



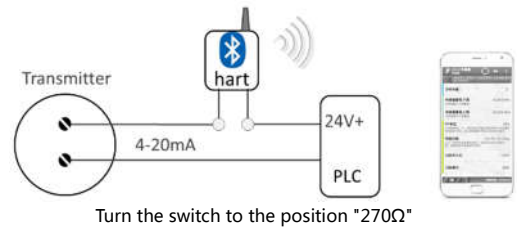
Turn the switch to the position "24V/270Ω"

- **Parallel mode** Connect in parallel (the loop resistance > 250Ω)



Turn the switch to the middle position.

- **Series Mode 1** It is recommended to use series connection when the loop resistance < 250 ohms.



Turn the switch to the position "270Ω"

③ Connect Valve



- Toggle modem switch to middle position
- Power the valve use signal generator

④ Specifications

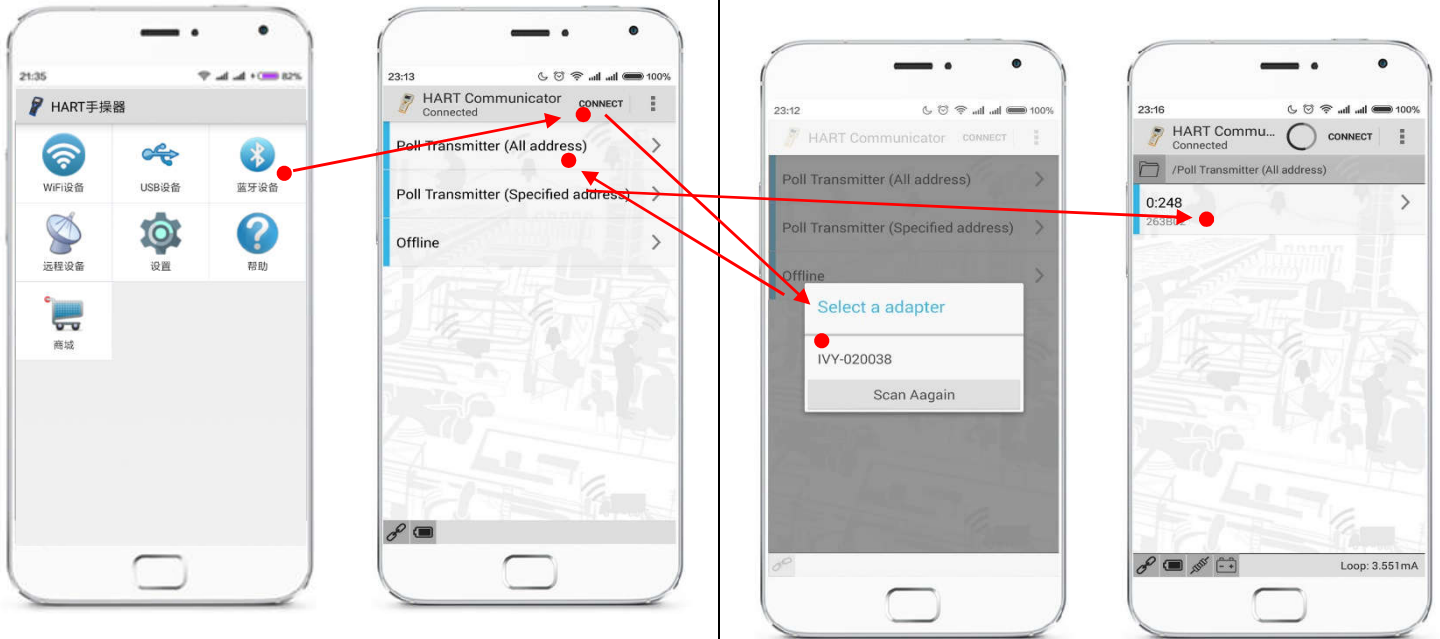
Standard	China GB/T 29910.1 ~ 6-2013 IEC-62591/IEC-61158/IEC-61804
Wireless	BLE 4.0 , Distance 10 meters
Output Voltage	Voltage 21.6V , Max Current 45mA
Battery Capacity	2000mAh Lithium Polymer Battery
Battery Life	Power Transmitter with Use i595. - Loop Current 4mA : 8 hours - Loop Current 21mA : 4 hours Not Output Power : 16 hours
Charging Time	1A Current , 240 Minutes
Interface Protection	IEC 61000-4-2 , L4 (15KV Air Discharge) HART interface 1.5KV isolation
Dimensions	92mm x 70mm x 24mm (L x W x H)
Weight	150g
Operating Temp.	-20 °C ~ +50 °C
Environment Humi.	0% ~ 95% , No condensation

⑤ Supported transmitter list

Note: Universal HART parameters for all transmitter are supported, in addition to the advanced parameters of the following meters.

Vendor	Model
Rosemount	3051CD , 3051CG , 3051DP , 3051GP , 3051TG , 3051S , 8600D , 8800D , 8732E , 2088 , 248 , 3144 , Vortex , 8732C , 644
Micro Motion	1700 , 2700
E+H	• Promag 10D/10H10L10P/10W. 50D/50H/50L/50P/50W • Promass 40E/80A/80E/80F/80H/80I/80P/80S • Prowirl 72F/72W. t-mass 65I/65F. • Prosonic Flow 91W/93W.PMD 55/70/75, FMD 76/77/78, • TMT 182, FMR 240, FMR 25x, FMU 40, FEC 12.TMT72,TMT82
ABB	2600T 系列
Siemens	TH300
Yokogawa	DY 系列、 SE 系列、 EJA110A、 EJA110E、 EJA530
Fuji	FCX-A2 FCX-A3S
Fisher	DVC6000 系列/DVC6200 系列/DVC2000 系列
Others	WIKA、 中锐、 华控、 山武、 浙大中控、 朗博 LABOM 、 盛大克、 川仪、 德尔森、 洛丁森、 立格、 威尔泰、 上润、 Wise 等

⑥ Android APP(Download From hart.woyatech.com)

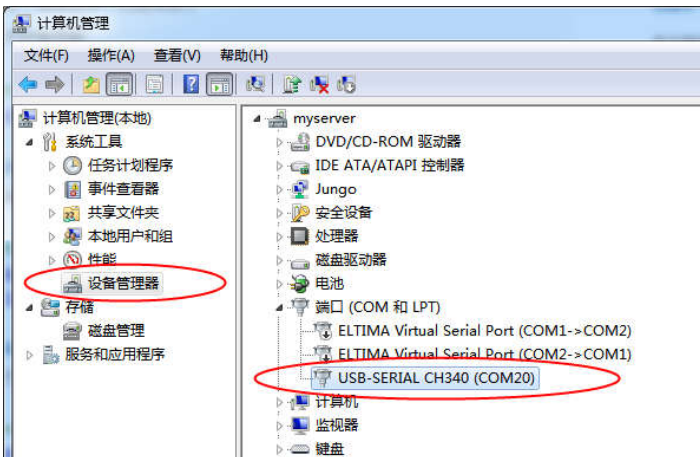


1. Use built-in 24V. Turn the switch to the position "24V/270Ω".
2. Check the 24V Led on. If not, refer to FAQs.
3. Remove any other powers of loop, then connect transmitter to i595.
4. Connect APP and i595 by Bluetooth.
5. Refer to the steps pictures above.

⑦ Use As A PC Modem

Install Drivers & Software

- Download http://doc.hartcomm.cn/modem/cn/01_drivers install, then restart pc
- Plug modem into USB port, wait installation complete
- Right-click "Computer" -> "Manager" -> "Device Manager". Port No. is COM20 in this example as shown below picture
- Install HART softwares http://doc.hartcomm.cn/modem/en/02_hart_tools



⑧ FAQ

- **24V LED off when start**
 - For security, modem will not keep 24V DC outputting after reset even though the toggle switch is at "24V/270Ω" position. Please reset toggle switch
- **Scan no transmitter**
 - If the transmitter LCD does not light up, Please check the connections.
 - Misuse built-in resistor, Please check resistor toggle switch.
 - restart computer after driver installation.
 - HART software choose the right COM port.
 - Contact us.

Shanghai WOYA IoT Technologies Co., Ltd.
www.woyatech.com
support@woyatech.com